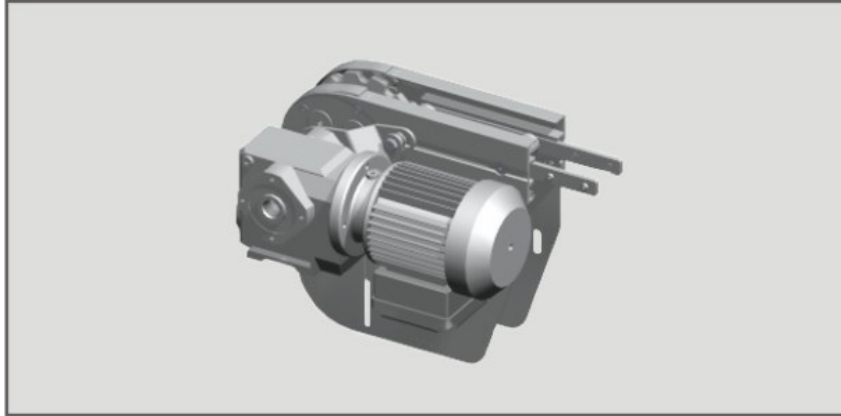


# Drive Unit

Last Modified on 18/11/2019 12:05 pm CET

## Product Information XBEB A85



<b>Product Number</b>	XBEB A85	<b>Product Group / Product Type</b>	X85 / CD01
<b>Name</b>	End drive unit		
<b>Description</b>	HPV-L-G-V6-29-WA30-MM07-50 Hz/380-500-C-P< ( <a href="http://repl.flexlink.com/os/loadcart.htm?cartid=197604">http://repl.flexlink.com/os/loadcart.htm?cartid=197604</a> )</td>		
<b>Unit</b>	PCE	<b>Class</b>	C
<b>Weight</b>	15.0 kg	<b>Country of origin</b>	Poland

## Speed & Motor Information

- **Actual max speed at 50 Hz** 29 m/min
- **Actual min speed at 10 Hz** 5.6 m/min
- **Actual chain pull** 1205 N
- **Motor power** 0.75 kW
- **Motor Ampere** 1.9 A
- **Brake** No
- **Energy efficiency class** IE3
- **Motor designation** DRN80M4
- **Motor family** Movimot

For more information see [X85 conveyor system \(http://www.trak-on.ru/files/FlexLinkX85%20catalogue.pdf\)](http://www.trak-on.ru/files/FlexLinkX85%20catalogue.pdf) and [X85 MAINTENANCE MANUAL< \(https://automaticfeeder.com/PDF/FlexLinkCatalog/Maintenance/5814EN-3\\_Maintenance.pdf\)/p>](https://automaticfeeder.com/PDF/FlexLinkCatalog/Maintenance/5814EN-3_Maintenance.pdf)

## Protective and safety devices

Safety devices should be checked at regular intervals.

- **Check the protective cover on the cleated chain conveyor return chain.**
- **Drive units type H, have a slack protection for the conveyor chain. Check that the slack protection plates are in place,**

and that the chain does not slacken enough to hang below the plates.

- Check the protective cover for the conveyor chain on intermediate drive units.
- There may be other types of guarding which are specific to your installation, and these must also be checked. See the system documentation.

