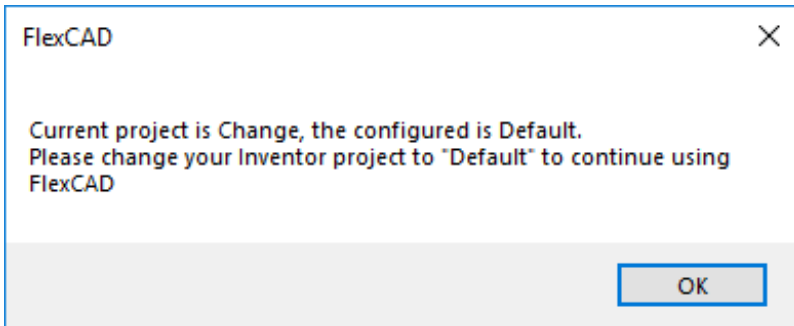


# Default project

Last Modified on 12/02/2019 10:06 am CET

Version 1.0.6964.26312 (and newer) of FlexCAD is prepared for Amber. To use Amber properly it is required to set the active project in Inventor to "Default". If any other project is active at startup an information message will be displayed:



If Amber is not used it's possible to continue anyway. Click **OK button** to continue with the current project. FlexCAD will be launched normally.