

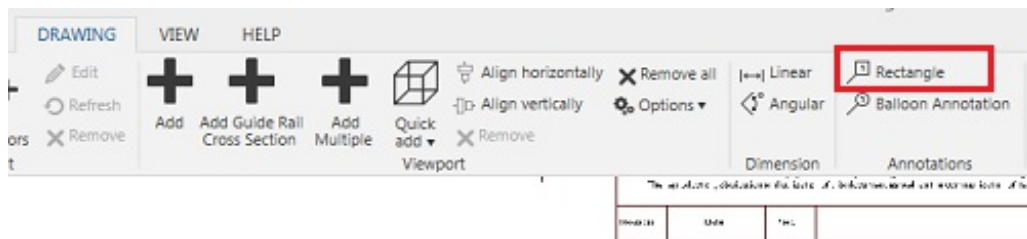
# Add free text

Last Modified on 06/11/2019 8:50 am CET

There is no separate feature for free text in Design Tool drawings. However, it is quite simple to use the Rectangle Annotation feature with a small modification.

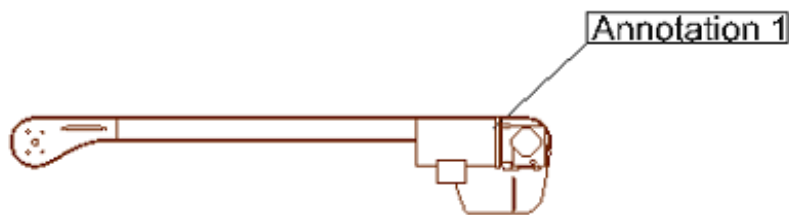
## Add annotation

Click on **Drawing tab** -> **Annotation group** -> **Rectangle button** to activate the Rectangular Annotation feature.



Pick the start position by selecting a snap point on a conveyor.

Select an annotation text box position by clicking in the drawing area.



## Convert annotation to free text

Select the annotation text again.

The Annotation Properties panel is displayed.

Select **None** in the OutlineStyle parameter drop-down menu.

Select **None** in the IndicatorStyle parameter drop-down menu.

Annotation Properties

### Annotation

Coordinates  World  Parent  Object

X	-118.37	Y	159.43	Z	0.00
Rx	0.00	Ry	0.00	Rz	0.00

Parameter

Text

IsTextMultiLine

Material

Height

IndicatorSize

Thickness

Floating

LockToNode

OutlineStyle

IndicationStyle

OutlineSpacing

OutlineMaterial

LayerName

BalloonRadius

Drag-and-drop the annotation to the correct position.

**Note:** The annotation is still invisibly connected to the original snap point on the conveyor.