

Export spiral conveyor CAD model

Last Modified on 05/11/2019 1:39 pm CET

CAD models of standard FlexLink spiral conveyors (product no 5995512) are not available from the FlexLink CAD service (provided by Cadenas). But, there's actually another method to get a CAD model of the spiral: Export from FlexLink Design Tool by using the CAD Generator feature.

Prerequisites

Flex Design Tool + active lease

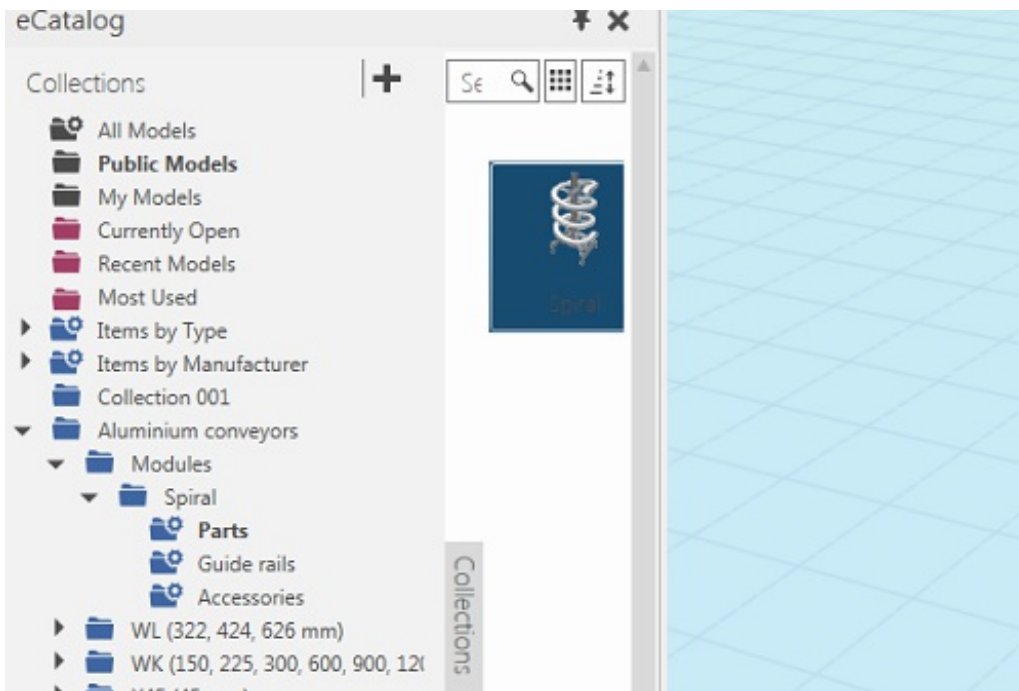
Information about how to get started: <https://kb.flexlink.com/help/fldt-lease-management-for-users>

Design and CAD component

Open *FlexLink Design Tool*.

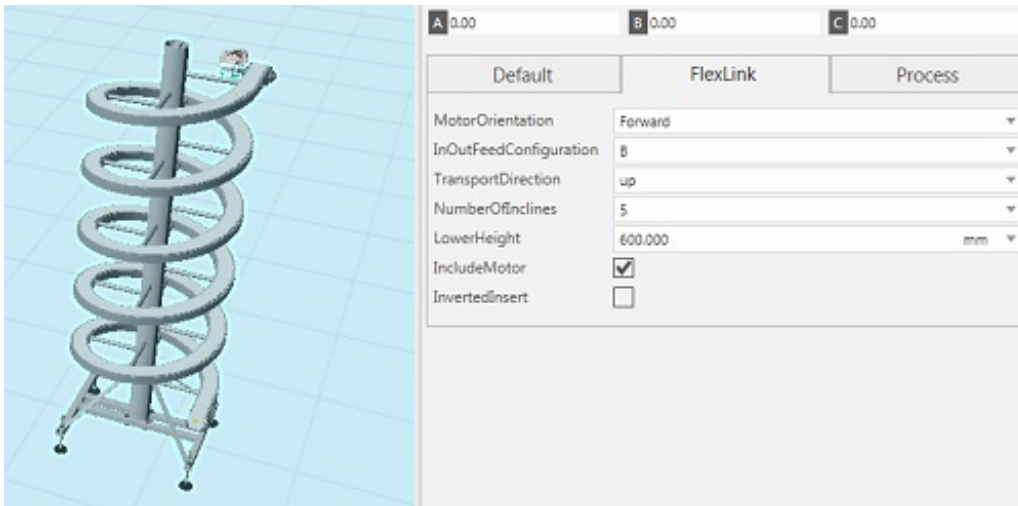
Select *Aluminium conveyors/Modules/Spiral/Parts folder* in the eCatalog.

Drag-and-drop a *Spiral component* to the 3D-world.



Adjust the parameters in the Properties panel to match the configuration that is needed.

Note: The parameter settings in the properties panel are only for visualization in the 3D world.



Configure the spiral component

Select the **Spiral component** in the 3D-world.

Click **Home tab/Component group/Configure button** to configure the component. Or use the keyboard shortcut **CTRL + SHIFT + C**.

Configuring Spiral

Main questions

- Type: G
- Transport direction: Up
- Lower height: 600
- Number of windings: 4.75
- Important information! Spirals with more than 4 windings must have a support to the top
- Upper height: 2975

Motor questions

- Load (kg/m): 1 kg/m
- Speed type: Fixed
- Visible speed values: All values
- Desired speed (m/min): 2
- Voltage: 230 V
- Thermal protection: No
- The motor need cooling when speed is ≤ 5 m/min

Not included, has to be order separately

- Suggested motor: 5045435
- Motor designation: DR63M6
- Motor power for suggested motor (kW): 0.12
- Suggested torque arm: 5057039
- Suggested torque arm absorber: 5111548

Description

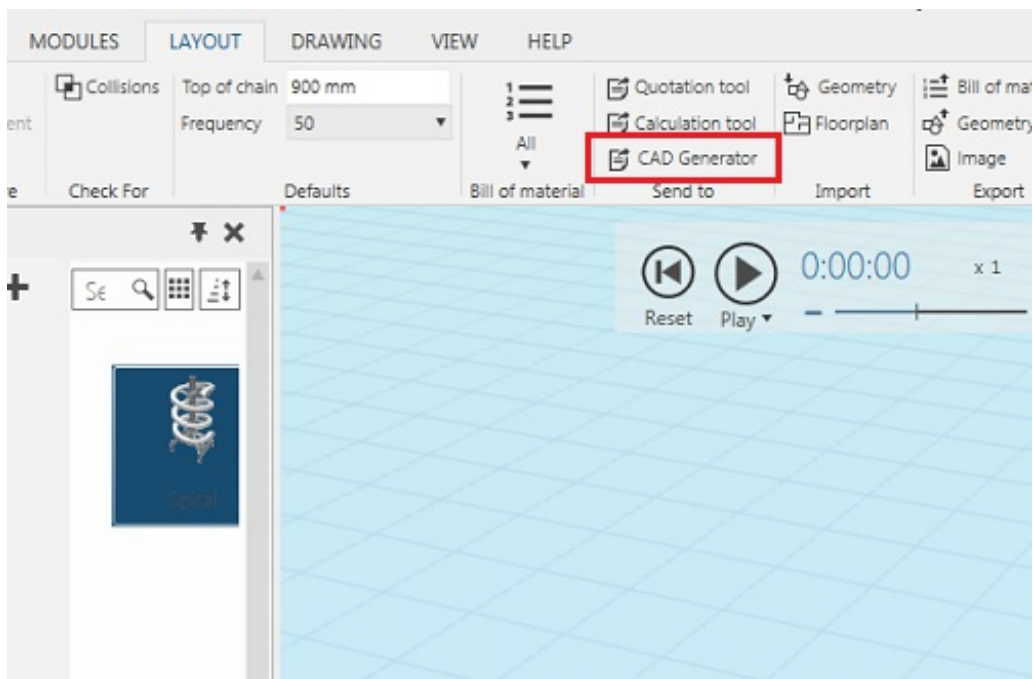
Previous Done!

All settings from the Properties panel should be preset, but to be sure to get the correct CAD model, check all settings in the configuration dialog and adjust, if necessary.

Click **Done**.

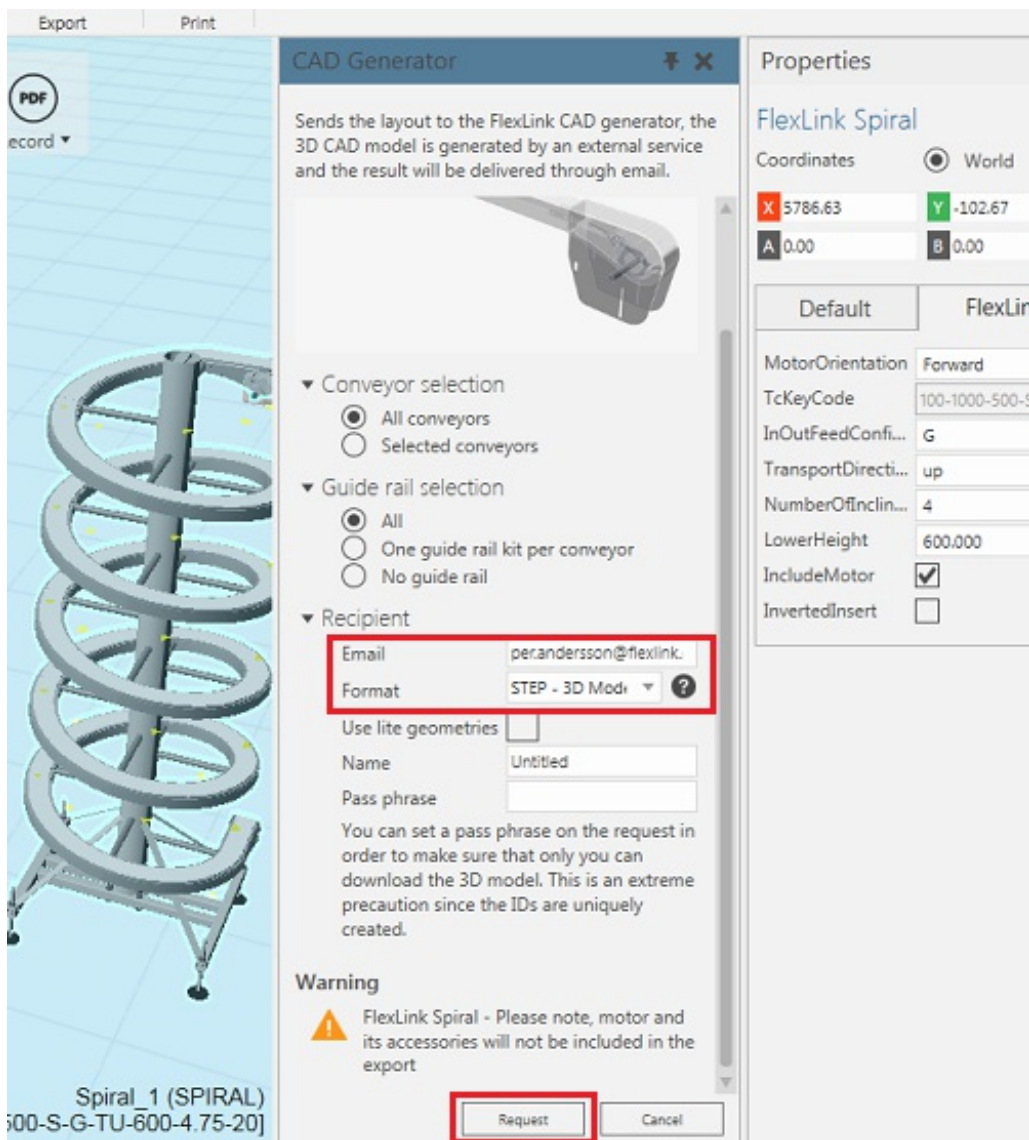
Export the CAD model

Click **Layout tab/Send to group/CAD Generator button**.



The Send to CAD Generator panel is displayed were it's possible to make a few choices.

Note: Motor and accessories are not included in the CAD model as these are separate parts that are ordered separately.



Make sure the e-mail address is correct.

Select **CAD format**.

Click **Request button**.

An external service process the information, creates a CAD model and sends an e-mail with a download link