

Lease management for users

Last Modified on 05/11/2019 1:23 pm CET

To be able to use FlexLink Design Tool a license has to be leased from FlexLink. This is called a "lease". After an application has been submitted a user account is created in the lease management system by the local administrator. A lease is then assigned and connected to the account. The user login to Design Tool with e-mail address and password and there is no need for the user to keep track of any license code.

Note: The Design Tool user account is not the same account as the My FlexLink account and the user credentials are not synchronized.

Apply for lease

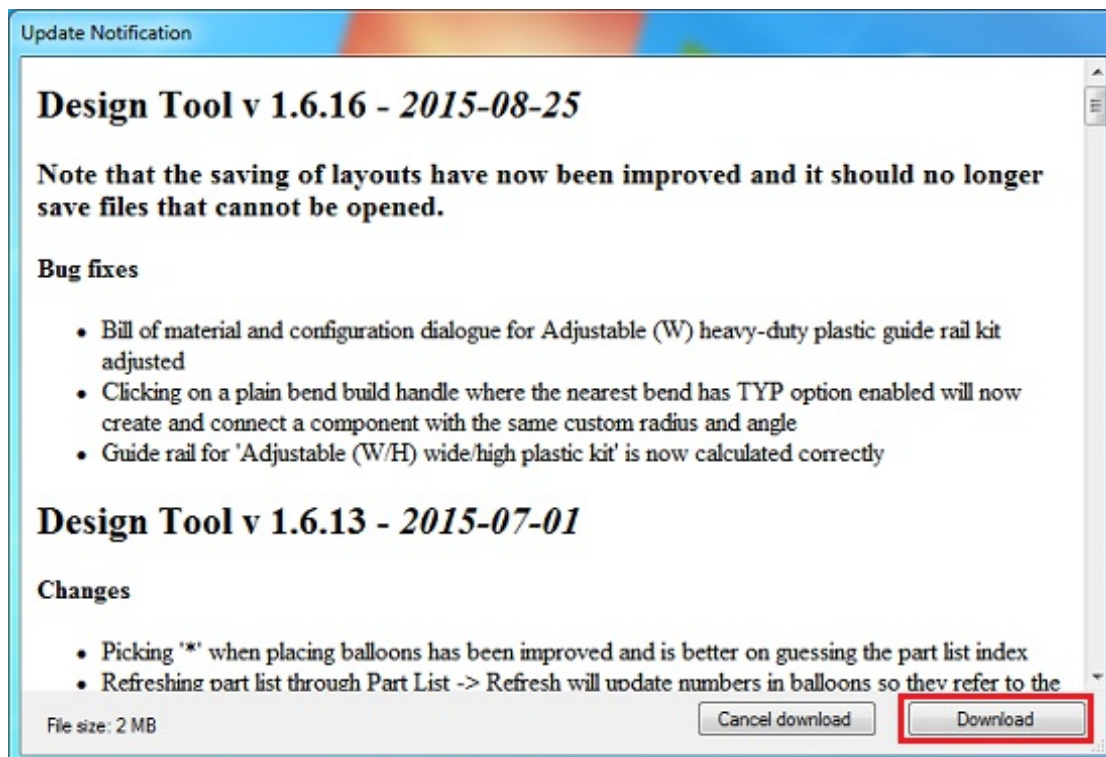
Make sure Design Tool has been downloaded and installed properly.

Click on **Windows Start menu / All Programs / FlexLink Design Tool folder / FlexLink Design Tool** to start the application.

Design Tool will immediately check for available updates. We strongly recommend to download and install all updates that are pushed out.

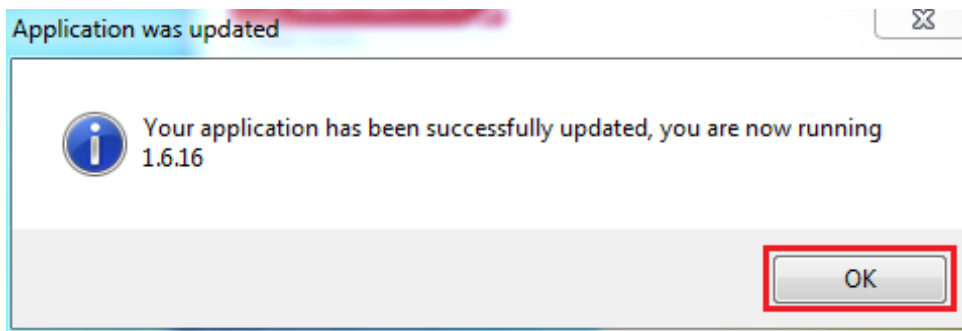
Click **Download** to download and install the update.

Note: The update notification popup window is not displayed if no updates are available.



Wait until the download and installation process is finished.

Click on **OK**.



The lease client popup window is displayed.

Click on ***Apply for Lease***.

A window titled "FlexLink Design Tool Lease Client" with standard Windows window controls (minimize, maximize, close) in the top right. The main area contains a form with the text "Please enter lease credentials" followed by a blue hyperlink "Apply for Lease" which is highlighted with a red rectangular border. Below this are two input fields: "Email address:" and "Password:". Under the password field is a blue hyperlink "Forgot password?". At the bottom of the form are two buttons: "Submit" and "Cancel".

The application form web page is displayed, or can be accessed by clicking on [this link](https://webapp1.flexlink.com/myflexlink/applyforfldtlicense.htm).
(<https://webapp1.flexlink.com/myflexlink/applyforfldtlicense.htm>)

Fill in the form and click on ***Submit***.



Apply for FlexLink Design Tool lease

Please enter your contact details in order to apply for a FlexLink Design Tool lease. After you have submitted your application, you will be contacted by a FlexLink representative with more information.

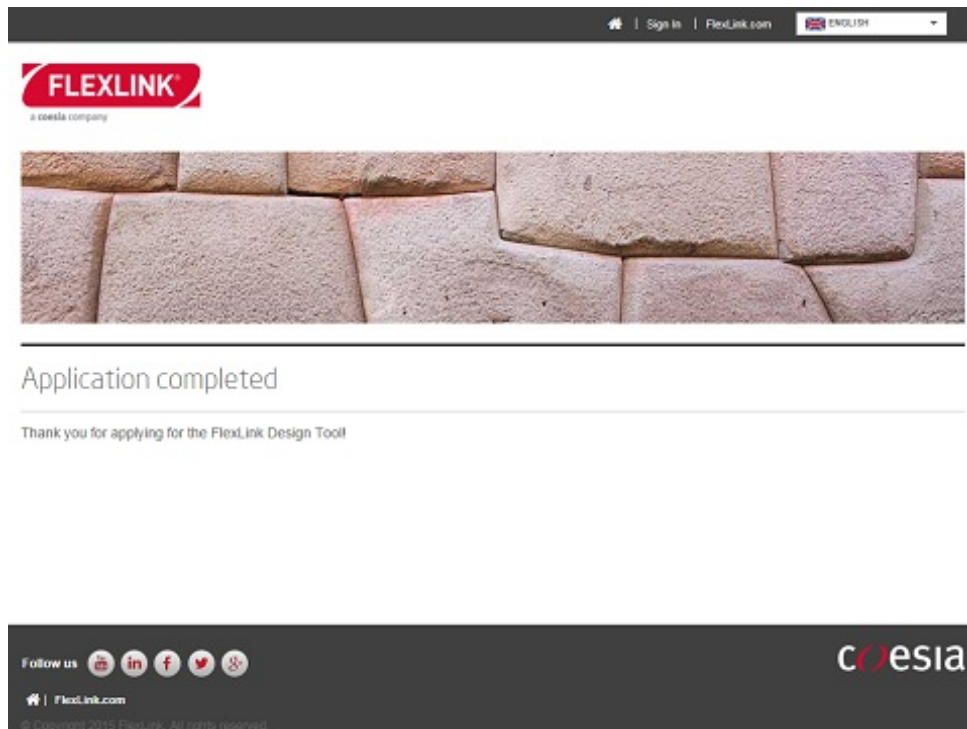
E-mail

First name

Last name

Country
Select Country

An e-mail with the application is sent to the local administrator and a confirmation is displayed. When the application is approved a user account is created and a lease is assigned. Usually this is done within 24 hours, but it can also take a few days depending on workload.




Activate account

An account activation e-mail is sent to the user from noreply@flexlink.visualcomponents.net.

Click on the active account link in the e-mail.

Activate your lease account Inbox x

 **noreply@flexlink.visualcomponents.net**
to me ▾

Dear bpo.andersson@gmail.com

An account has been created for you at the FlexLink Design Tool lease web site.

Follow the link below to activate your account:

https://flexlink.visualcomponents.net:443/Account/CollectInfo.aspx?enrollCode=GKVrsTu3Op1aUHXVmlP-iOjaO80plhpa_GAaNYGH-fHO

You currently have the following leases:
FL Configurator until 2015-12-31

Best regards,
FlexLink Engineering Tools team

PS: This is an automatically generated email message, please do not reply directly to this message. If you have any questions or concerns, please contact softwaresupport@flexlink.com

The account information web page in the lease system is displayed.

Select password and enter contact details (first and second name).

Click on **Save changes**.

bpo.andersson@gmail.com: Enter your information.

Enter your contact details and select a password to use when activating your software.

Note: The password must be at least 6 characters long.

Select password:

Confirm password:

First name:

Last name:

The account is now activated.

bpo.andersson@gmail.com: Enter your information.

Account details confirmed

You can now use this email and password to activate lease licenses for Visual Components products.

You can also [log in](#) to view available lease licenses.

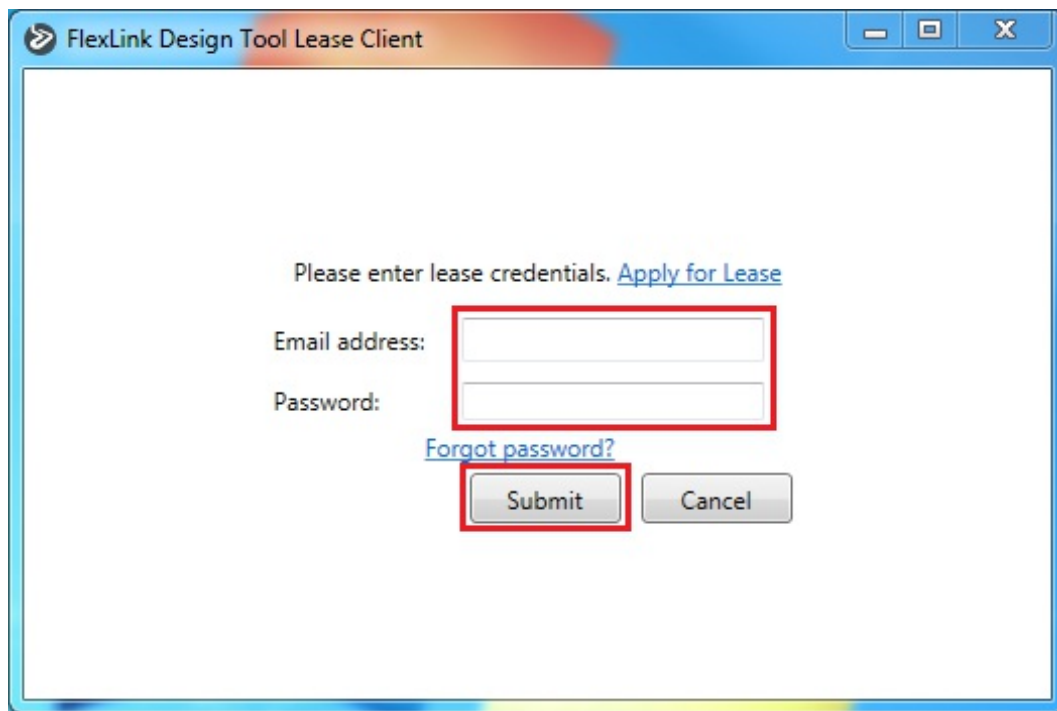
Use the lease

Click on **Windows Start menu / All Programs / FlexLink Design Tool folder / FlexLink Design Tool** to start the application.

The lease client popup window is displayed.

Enter e-mail address and the password from the previous activate account step.

Click on **Submit**.



The lease credentials are saved and login is done automatically next time the application is started.

Note: The Design Tool user account is not the same account as the My FlexLink account and the user credentials are not synchronized.

The lease is valid as long as Design Tool is used regularly. It is possible to use the application offline without Internet connection for 30 days (after first login is done). After 30 days Internet connection is necessary at application startup to reactivate the lease. However, we recommend to always work online at startup to receive available updates. If Design Tool is not used at all for 6 months the lease will be unassigned completely.

Reset password

Click on **Windows Start menu / All Programs / FlexLink Design Tool folder / FlexLink Design Tool** to start the application.

The lease client popup window is displayed.

Enter e-mail address and click on **Forgot password?**

FlexLink Design Tool Lease Client

Please enter lease credentials. [Apply for Lease](#)

Email address:

Password:

[Forgot password?](#)

The password reset request is sent to the lease system and an e-mail with instructions is sent to the user.

Click on **OK**.

Request submitted

Password reset request submitted. You will receive an email shortly.

Open the password reset link e-mail.

Click on the reset password link in the e-mail.

Password reset link

Inbox x

noreply@flexlink.visualcomponents.net

to me

Dear bpo.andersson@gmail.com

This message was sent because of a password reset request made on your account on the FlexLink Design Tool lease web site.

Follow the link below to reset your password:

<https://flexlink.visualcomponents.net:443//Account/ResetPassword.aspx?code=G.JShquTBC3MBtUqZAec0uuzQSHi0CagX4uQIRW.WfO>

NOTE: This link only valid for a limited time, and it will expire on Wed, 26 Aug 2015 11:06:37 GMT

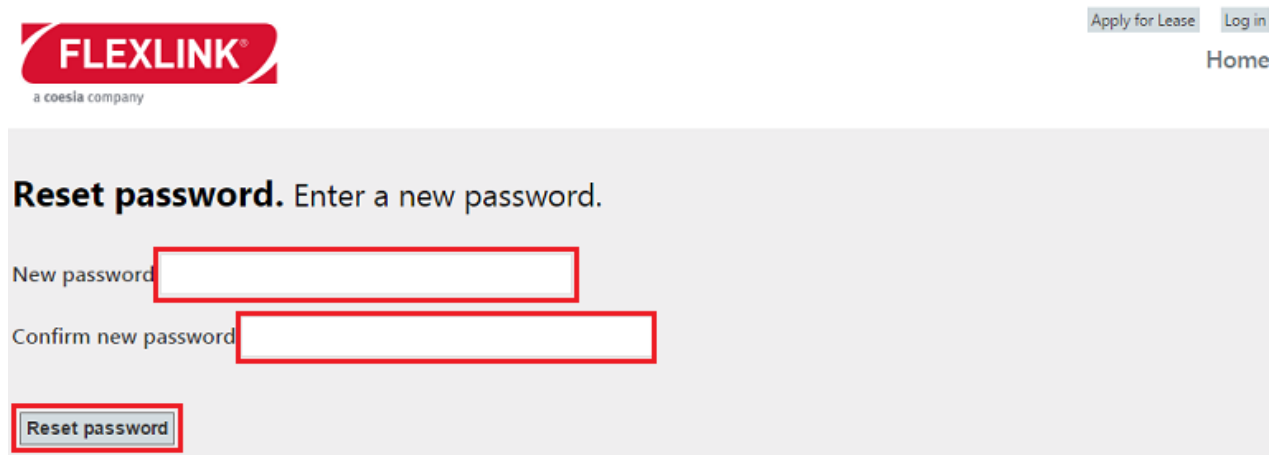
Best regards,
FlexLink Engineering Tools team

PS: This is an automatically generated email message, please do not reply directly to this message. If you have any questions or concerns, please contact softwaresupport@flexlink.com

The reset password web page in the lease system is displayed.

Enter new password.

Click on **Reset password**.



The password reset is confirmed.

Close web page.

log in to this site.' A 'Continue' button is located at the bottom left of the form area." data-bbox="104 427 906 591"/>

Click on **Windows Start menu / All Programs / FlexLink Design Tool folder / FlexLink Design Tool** to start Design Tool.

Login with the new credentials.

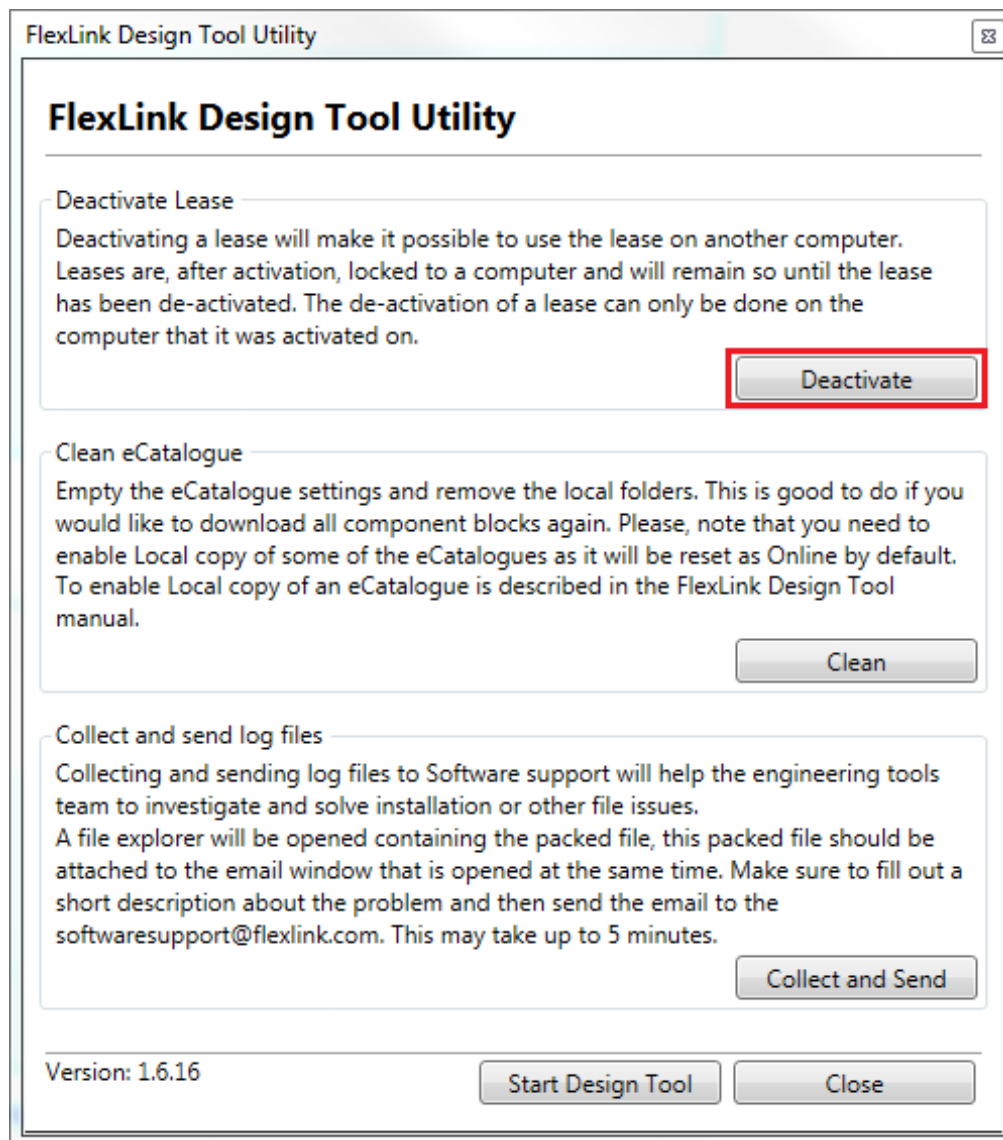
Move lease

After activation is done the lease is locked to the computer. It is not possible to use the lease on several computers simultaneously. However, the lease can be moved to another computer after deactivation.

Note: The lease has to be deactivated on the computer it was activated on.

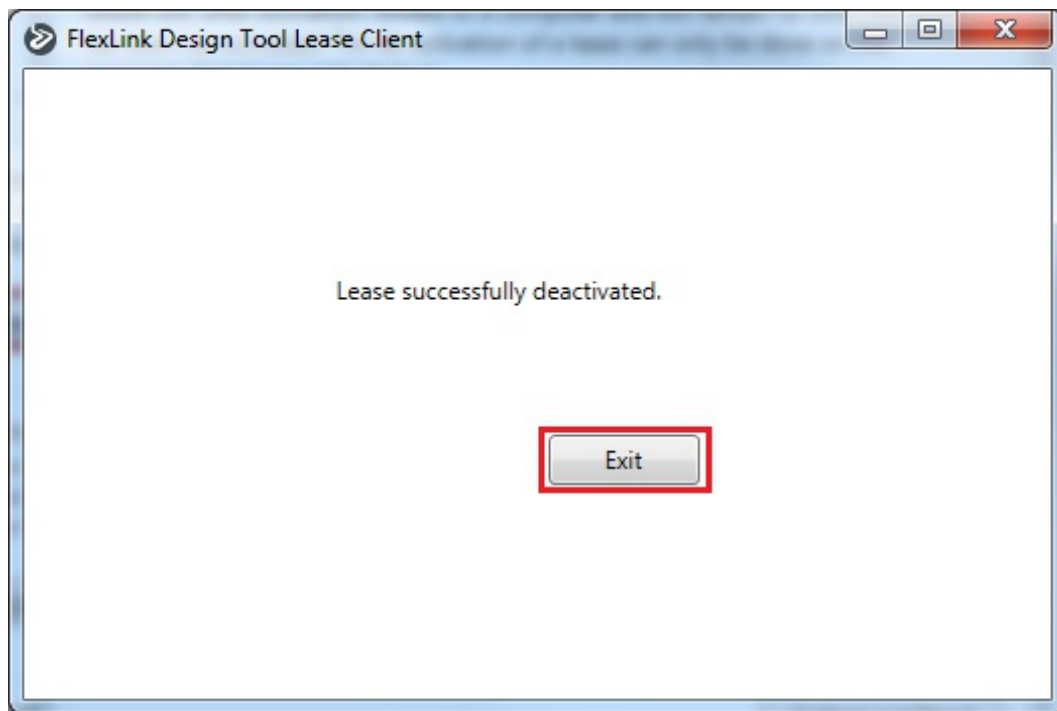
Click on **Windows Start menu / All Programs / FlexLink Design Tool folder / FlexLink Design Tool Utility** to start the utility application.

Click on **Deactivate**.



As confirmation is displayed.

Click on *Exit*.



Click on **Windows Start menu / All Programs / FlexLink Design Tool folder / FlexLink Design Tool** to start Design Tool on a another computer.

The lease client popup window is displayed.

Enter e-mail address and the password from the previous activate account step.

Click on **Submit**.

