

# Getting started

Last Modified on 07/06/2019 3:57 pm CEST

This article describes how to install and to get started using the Quotation Tool (FLQT).

The FlexLink quotation tool is currently only be obtained internally within FlexLink but as a partner you can also get hold of a copy of the application. If you want to try it out please use the **Support** function to the left to send us a request to become a user.

## Pre-requisites

- Windows 7 or later
- Office 2013 or later.
- Internet connection
- A correctly configured People Finder profile (setup by FlexLink).

## Install

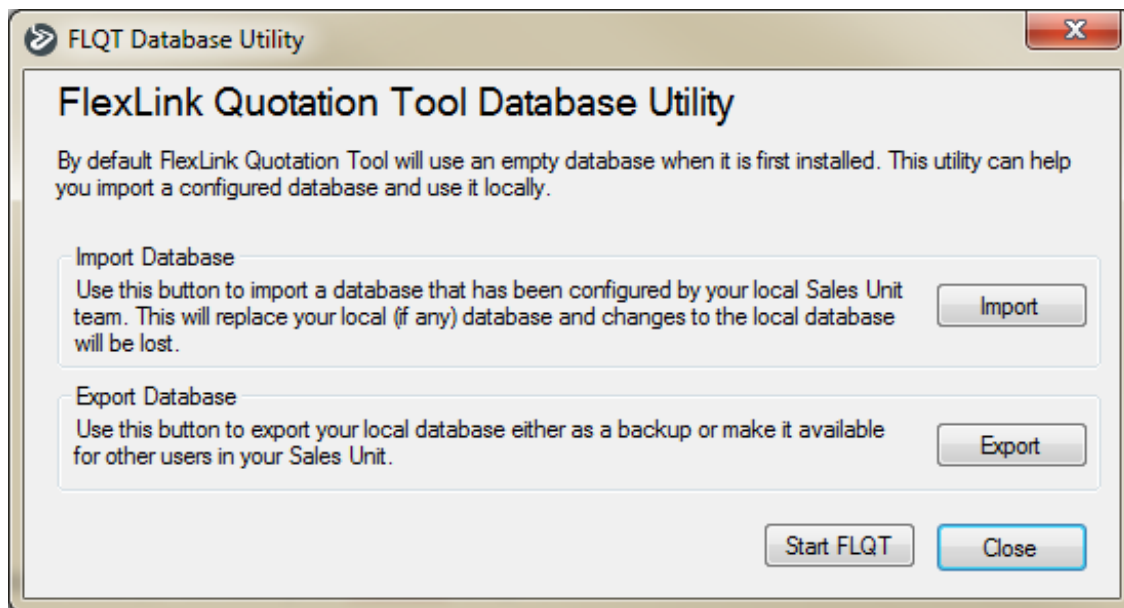
Internal user; install the quotation tool from Software Center.

External users; download the setup.exe from MyFlexlink/Download area (or contact your Flexlink unit).

Talk to your local engineering tools administrator before proceeding to the next step.

## Running the application for the first time

The first time you run the application you see the FLQT Database Utility window appear on your screen.



If you have an administrator (which you should have if your unit/department is already using FLQT), ask him/her where to find the database file and press the **Import** button to import the database. If you haven't got a shared database, skip this step.

The next thing that happens is that you'll be prompted to do a web update. During the web update the quotation tool will download the latest customer data, products etc. to your local database.

When the update is done the window will be closed and you are ready to use the quotation tool.

After you've done the initial web update most functions in FLQT can run offline. But retrieving price data (sales price and cost) from SAP requires an internet connection, so if you add new elements to a quote or if you run a price update you need to be online.

If you are unfamiliar with the basics of the tool we suggest you start with the user guide that you will find in the **Help** menu.